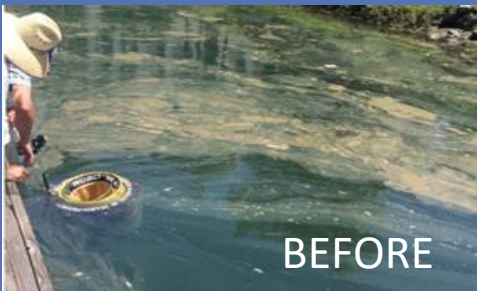


FLOATING TRASH COLLECTOR



YOUR NEEDS



BEFORE

- › Clean up and eliminate all debris accumulation points at your location
- › Restore the overall cleanliness of water
- › Ensure continuous cleaning - 24/7
- › Enhance your environmental sustainability efforts and Clean Marine Status
- › Increase public and boater awareness of the issue of water pollution from plastics & debris

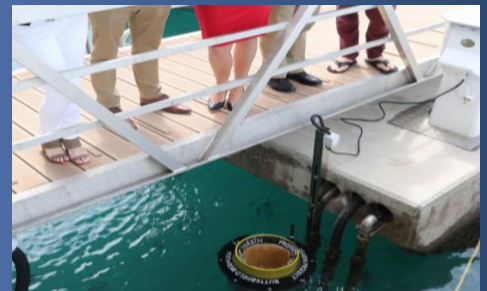
OUR SOLUTION



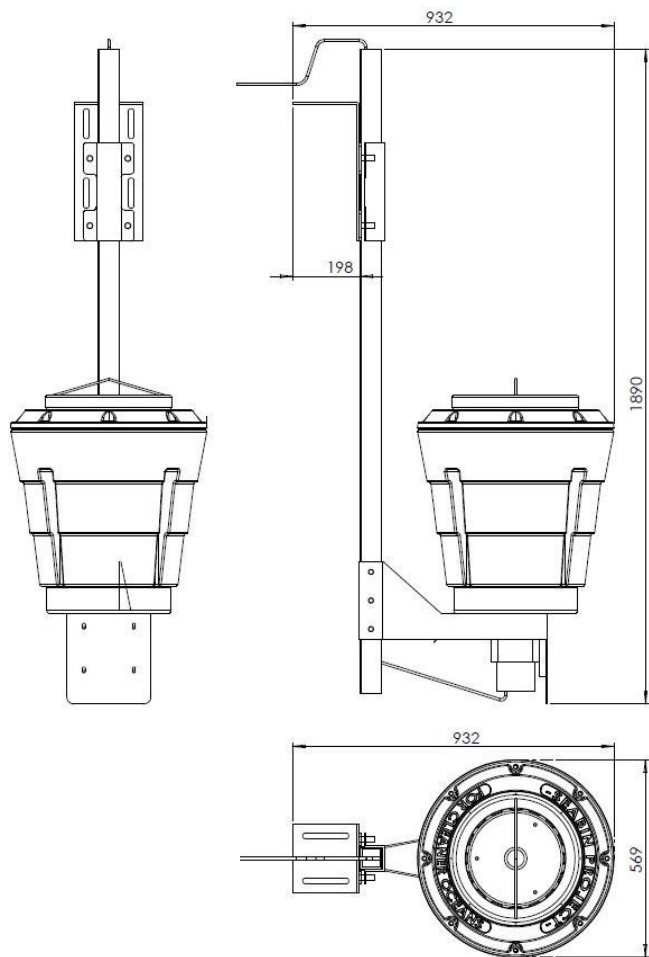
AFTER

- › A floating trash, debris collector
- › Positioned on any floating dock
- › Easy handling and maintenance :
1 person only
- › Collect all debris and micro debris, up to 2 mm : plastic particles, cigarette butts, food wrappers, seaweed etc.

ADVANTAGES

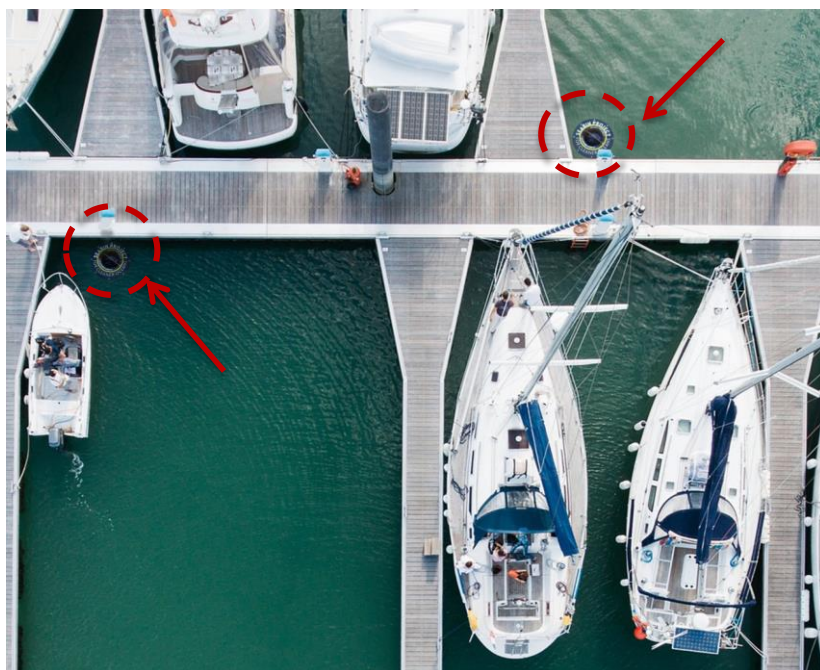


- › Constant and autonomous cleaning
- › Easy to use, easy maintenance
- › A marketing, communication and awareness tool



REQUIRED SITE CONDITIONS

1. Your location has floating docks or pontoons
2. There is staff to maintain Seabin on a daily basis
3. Maximum distance to an electric energy supply point is 6 meters
4. Voltage provided
5. Freeboard range between 460mm minimum and 820mm maximum
6. Maximum water current speed range equal or below 4 knots
7. Maximum wave height in the marina equal or below 0,3 meters
8. There is a minimum 1.2 meters of draft on the lowest astronomical tide



TECHNICAL SPECIFICATIONS

- Power 110V / 220V500 watts
- Pump: 25,000 LPH
- Sturdy HDPE construction
- Marine grade stainless bracket
- Capture micro plastics > 2mm
- Catch bag holds 20kg
- Weight with bracket: 40kg
- Electrical cable: 6kg

PUBLIC PRICE *

*Ex factory, installation not included

3 300 €

PORALU ADVANTAGES

- › More than 35 years of expertise
- › Turnkey project design and management
- › Product flexibility to suit your requirements
- › Quality certification
- › Modular and flexible installation
- › Easy maintenance
- › Resistance tests
- › Certified welders
- › Customer proximity
- › Responsiveness



Seabin represents the Poralu Marine identity, willing to take care of the eco-system that surrounds us and contributes to the environmental protection

**Poralu Marine teams assist you at all stages:
Pre-project, design, engineering, manufacture, installation and after-sales service**